



DESTINATION
Missoula
MONTANA



DESTINATIONMISSOULA.ORG



MORE THAN A PLACE, MISSOULA IS AN EXPERIENCE.

Nestled in the heart of the northern Rockies of Western Montana, Missoula is known as the “Garden City” for its lush landscape and forested surroundings. Offering serene mountain views from every angle and state-of-the-art meeting facilities, Missoula is the perfect location to combine business and relaxation. Dubbed the cultural center of Montana, Missoula also provides an unexpected sophistication.

Some might call it unique, cool, or hip. Others will experience it as serene, welcoming, and replete with natural beauty. You might spend time here and see it as vibrant,

active, and pulsating with places to go and things to do. The beauty of Missoula is that it is all these things and more.

Think of it as a little city or a big town. Approximately 112,000 people call the area home. Off the banks of the Clark Fork River, there’s an active downtown, and it’s packed with boutiques, day spas, restaurants, cafés, and curio shops. Add in a river wave designed for kayaking, a carousel with adjacent play park, bike trails and walking paths galore, a riverside park continually hosting events, festivals and fairs, and you quickly realize that downtown is indeed a dynamic place. And that’s just the beginning.



QUICK FACTS:
**MISSOULA,
MONTANA**

FOUNDED: 1864
POPULATION (2021): 76,784
NICKNAME: THE GARDEN CITY

MOTTO: “THE DISCOVERY
CONTINUES”
ELEVATION: 3,209 FEET

COORDINATES:
46°51 45 N
114°0 42 W



HAPPIEST CITIES IN AMERICA

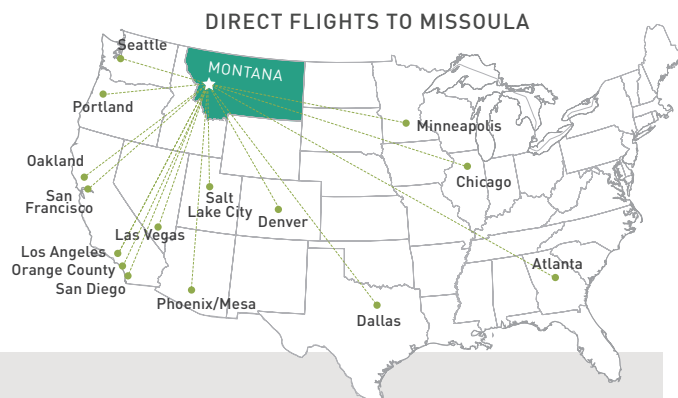
WalletHub, 2021



The Missoula Montana Airport (MSO) is located 5.6 miles from downtown Missoula. Air carriers include Delta, United, Alaska/Horizon, American, and Allegiant Air, providing direct flights to 15 major markets*.

Three major highways provide easy access to Missoula: Interstate 90, U.S. Highway 10/93, and Montana State Highway 200. The Mountain Line public transit system offers free ridership making travel within Missoula convenient.

* Flight routes are subject to change



DISTANCE (IN MILES) FROM MISSOULA:

Billings, MT.....	345	Great Falls, MT.....	168	Salt Lake City, UT.....	524
Boise, ID.....	369	Helena, MT.....	113	San Francisco, CA.....	1,147
Bozeman, MT.....	202	Kalispell, MT.....	121	Seattle, WA.....	476
Calgary, Alberta, Canada.....	364	Los Angeles, CA.....	1,211	Spokane, WA.....	198
Denver, CO.....	895	Phoenix, AZ.....	1,230	Whitefish, MT.....	138
Glacier National Park.....	140	Portland, OR.....	549	Yellowstone National Park.....	264

CAR RENTAL

Alamo Airport.....	.406.543.3131
Alamo West Broadway.....	.406.549.3355
.....	www.alamo.com
Avis Rent A Car.....	.406.549.4711
.....	www.avis.com
Budget Rent A Car.....	.406.543.7001
.....	www.budget.com
Dollar Car Rental.....	.406.542.2311
.....	www.dollar.com
Enterprise Rent-A-Car:	
Airport.....	.406.721.2484
Broadway.....	.406.721.1888
.....	www.enterprise.com
Hertz Rent-A-Car.....	.406.549.9511
.....	www.hertz.com
Missoula Car Rental	
.....	.406.412.7210
.....	missoulacarrental.com
National Car Rental.....	.406.543.3131
.....	www.nationalcar.com
Thrifty Car Rental.....	.406.549.9511
.....	www.thrifty.com

TAXI SERVICE

Huckleberry Express Taxi.....	.406.369.3520
.....	www.huckleberryexpresstaxi.com
Lyft.....	www.lyft.com
Missoula Green Taxi.....	.406.728.8294
.....	www.missoulagreentaxi.com
Uber.....	www.uber.com
Yellow Cab Missoula.....	.406.543.6644
.....	www.yellowcabmissoula.com

MISSOULA BY CAR

Missoula is easily accessible by highway. Interstate 90 runs east-west through the Missoula valley, and Montana Highway 93 travels north-south.

AIR TRANSPORTATION

Missoula Montana Airport	
.....	5225 Hwy 10 West
.....	.406.728.4381
.....	www.flymissoula.com

AIRLINES

Alaska Airlines.....	www.alaskaair.com
Allegiant.....	www.allegiant.com
American.....	www.aa.com
Delta.....	www.delta.com
United.....	www.united.com

CHARTER FLIGHTS

Minuteman Aviation.....	.406-728-9363
.....	www.minutemanaviation.com
Northstar Jet.....	.406-721-8886
.....	www.northstarmso.com

GROUND TRANSPORTATION

Airport Shuttler.....	.406.880.7433
.....	www.msoshuttle.com
Montana Adventure Shuttle.....	.406.493.2345
Mountain Line.....	.406.543.8386
.....	www.mountainline.com

FREE PUBLIC TRANSPORTATION WITHIN MISSOULA

Mountain Line.....	.406.5438386
.....	www.mountainline.com
Free bus service to/from Downtown Missoula to Missoula Montana Airport	

BUS TRANSPORTATION ARRIVING/DEPARTING MISSOULA

The Missoula bus depot is at 1660 West Broadway.	
Greyhound Bus Lines.....	.406.549.2339
.....	www.greyhound.com
Jefferson Lines.....	.406.546.2584
.....	www.jeffersonlines.com

CHARTERED BUS SERVICE

Beach Transportation.....	.406.549.6121
.....	www.beachtrans.com
Tucker Transportation.....	.406.273.2694
.....	www.tuckertransportation.com



DESTINATION
Missoula
MONTANA



THE TOP 10

FORWARD THINKING CITIES

Trip.com, 2019

» where to PLAY

For those in search of activities, Missoula does not disappoint. With over 200 dining establishments citywide, 43 of which are local restaurants, ranging from fast-food to five-star rated, every pallet and pocketbook are accommodated. If you're looking to do a little shopping, choose from one or all of Missoula's three shopping districts. Shop the name brands at Southgate Mall, choose from an array of box stores on Reserve St. or come downtown and shop the local boutiques. Not to mention, Missoula is home to 14 local breweries producing over 70 craft beers, three distilleries, one cider house and one winery. You can also catch a show at eight live music venues around town and pursue the local culture with dozens of art galleries.

For a full list of Missoula's attractions please visit www.destinationmissoula.org.



ATTRACTIONS



ARTS & ENTERTAINMENT



SHOPPING



DINING



OUTDOOR RECREATION

Don't forget to make time to experience Missoula's world-class recreation. The Clark Fork River runs through the heart of downtown offering kayaking, rafting and trout fishing. Mount Sentinel and "The M" are a mere 20 minutes hike from downtown, offering 180 degree views of Missoula. Additionally, there are seven major wilderness areas within minutes of downtown and over 30 miles of pedestrian and bike trails that follow the Clark Fork River through town.



TOP 25

BEST TOWNS EVER

Outside Magazine July, 2017

Missoula and the surrounding area offer a multitude of choices for where to rest your head, from unique bed and breakfasts to the comforts of your favorite hotel chains. Following are just a few of Missoula's lodging options. For a full list please visit www.destinationmissoula.org/where-to-stay.

<p>AC HOTEL MISSOULA DOWNTOWN 406.549.0119 175 N Pattee St., Missoula, MT 59802 www.marriott.com/hotels/travel/msoac</p>	<p>DOUBLETREE BY HILTON MISSOULA EDGEWATER 406.728.3100 100 Madison St., Missoula, MT 59802 www.missoulaedgewater.doubletree.com</p>	<p>RED LION INN MISSOULA 406.728.3300 700 W. Broadway St., Missoula, MT 59802 www.redlion.com/missoula</p>
<p>BEL AIRE MOTEL 406.543.0700 300 E. Broadway St., Missoula, MT 59802 www.belairemotelmissoula.us</p>	<p>ECONO LODGE 406.542.7550 4953 N. Reserve St., Missoula, MT 59808 www.choicehotels.com/montana/missoula/econo-lodge-hotels/mt048</p>	<p>RESIDENCE INN MISSOULA DOWNTOWN 406.542.6252 125 N. Pattee St., Missoula, MT 59802 www.marriott.com/en-us/hotels/msori-residence-inn-missoula-downtown/overview/econo-lodge-hotels/mt048</p>
<p>BEST WESTERN PLUS GRANT CREEK INN 406.543.0700 5280 Grant Creek Rd., Missoula, MT 59808 www.bestwestern.com/grantcreekinn</p>	<p>FAIRBRIDGE INN & SUITES 406.251.2665 3803 Brooks St., Missoula, MT 59804 www.fairbridgemiissoula.com</p>	<p>SLEEP INN 406.543.5883 3425 Dore Ln., Missoula, MT 59801 www.choicehotels.com/montana/missoula/sleep-inn-hotels/mt421</p>
<p>BROADWAY INN CONFERENCE CENTER 406.532.3300 1609 W. Broadway St., Missoula, MT 59802 www.broadwayinnmissoula.com</p>	<p>FAIRFIELD INN & SUITES 406.541.8000 5252 Airway Blvd., Missoula, MT 59808 www.marriott.com/en-us/hotels/msofi-fairfield-inn-and-suites-missoula/overview/</p>	<p>STAYBRIDGE SUITES MISSOULA 406.830.3900 120 Expressway, Missoula, MT 59808 www.staymissoula.com</p>
<p>BROOKS STREET MOTOR INN 406.549.5115 3333 Brooks St., Missoula, MT 59801 www.brooksstmotorinn.com</p>	<p>HILTON GARDEN INN MISSOULA 406.532.5300 3720 N. Reserve St., Missoula, MT 59808 www.missoula.HGI.com</p>	<p>STONECREEK LODGE 406.541.3600 5145 Airway Blvd, Missoula, MT 59808 www.stonecreeklodgemt.com</p>
<p>CITILODGE SUITES & MOTEL 406.549.4771 1135 W. Broadway St., Missoula, MT 59802 www.citilodgesuitesmissoula.us</p>	<p>HOLIDAY INN MISSOULA DOWNTOWN 406.721.8500 200 S. Pattee St., Missoula, MT 59802 www.ihg.com/holidayinn/hotels/us/en/missoula/msumt/hoteldetail</p>	<p>SUPER 8 MOTEL (BROOKS) 406.251.2255 3901 S Brooks St., Missoula, MT 59804 www.wyndhamhotels.com/super-8/missoula-montana/super-8-missoula-brooks-street/overview</p>
<p>CITY CENTER MOTEL 406.543.3193 338 E. Broadway St., Missoula, MT 59802 www.missoulacitycenter.com</p>	<p>HOLIDAY INN EXPRESS & SUITES 406.830.3100 150 Expressway, Missoula, MT 59808 www.hiexpress.com/missoulanw</p>	<p>SUPER 8 MOTEL (RESERVE) 406.549.1199 4703 N. Reserve St., Missoula, MT 59808 www.wyndhamhotels.com/super-8/missoula-montana/super-8-missoula-reserve-st/overview</p>
<p>C'MON INN 406.829.2172 2775 Expo Pkwy., Missoula, MT 59808 www.cmoninn.com/missoula</p>	<p>LA QUINTA INN 406.549.9000 5059 N. Reserve St., Missoula, MT 59808 www.laquentamissoula.com</p>	<p>THE WREN 406.401.4400 201 E. Main St., Missoula, MT 59802 wrenmissoula.com/</p>
<p>COMFORT INN I-90 SHOPPING DISTRICT 406.508.2440 4805 N. Reserve St., Missoula, MT 59808 www.choicehotels.com/montana/missoula/comfort-inn-hotels/mt11</p>	<p>MOTEL 6 (EXPO PKWY) 406.549.6665 3035 Expo Pkwy, Missoula, MT 59808 www.motel6.com/en/motels.mt.missoula.4034.html</p>	<p>THUNDERBIRD MOTEL 406.543.7251 1009 E Broadway St., Missoula, MT 59802</p>
<p>COMFORT INN - UNIVERSITY 406.549.7600 1021 E. Broadway St., Missoula, MT 59802 www.missoulacomfort.com</p>	<p>MOTEL 6 (UNIVERSITY) 406.549.2387 630 E Broadway St, Missoula MT 59802 www.motel6.com/en/motels.mt.missoula.4448.html</p>	<p>TOWNEPLACE SUITES BY MARRIOTT MISSOULA 406.721.6000 3055 Stockyard Rd., Missoula, MT 59808 www.marriott.com/msots-super-8-missoula-reserve-st/overview</p>
<p>COURTYARD BY MARRIOTT 406.549.5260 4559 N. Reserve St., Missoula, MT 59808 www.marriott.com/msoac</p>	<p>MY PLACE HOTEL - MISSOULA 406.926.1001 2951 Expo Pkwy., Missoula, MT 59808 www.myplacehotels.com/my-place-hotel-missoula</p>	<p>TRAVELODGE INN & SUITES BY WYNDHAM MISSOULA UNIVERSITY PARK 406.543.3102 800 E. Broadway St., Missoula, MT 59802 www.wyndhamhotels.com/travelodge/missoula-montana/travelodge-inn-and-suites-missoula-university-park/overview</p>
<p>DAYS INN & SUITES BY WYNDHAM MISSOULA UNIVERSITY PARK 406.549.5134 774 E. Broadway St., Missoula, MT 59802 www.wyndhamhotels.com/days-inn/missoula-montana/days-inn-and-suites-downtown-missoula-university/overview</p>	<p>QUALITY INN & SUITES 406.542.0888 4545 N. Reserve St., Missoula, MT 59808 www.choicehotels.com/montana/missoula/quality-inn-hotels/mt412</p>	<p>WOODSPRINGS SUITES MISSOULA 406.317.7444 3035 Stockyard Rd., Missoula, MT 59808 www.woodsprings.com/extended-stay-hotels/locations/montana/missoula/woodsprings-suites-missoula</p>

MEET IN MISSOULA

Both accommodating and inspiring, Missoula is a no-brainer meeting location. With 45 lodging facilities and 175,000 square feet of meeting space, it's a brilliant place to come together for ideas big and small. There's no place better suited to host team-building activities like skiing or whitewater rafting, indulging in a delicious post-meeting dinner or cocktail hour or exploring the town on rented bikes.

MISSOULA STATS

45

*total lodging
facilities*

3,400

*total
guestrooms*

175,000

*meeting space
square footage*

convention capacity

5,000

people

**5 OF THE HEALTHIEST
AND GREENEST CITIES IN AMERICA**

Greener Ideal August, 2015



UNIVERSITY OF MONTANA

The University of Montana welcomes any meeting or conference to campus featuring: a full service convention center, state-of-the-art technology, conference management, in-house catering, summer housing, sustainable practices and cultural activities. Featured venues on campus are the University Center, Continuing Education Conference Center, Adams Center, and Dennison Theater but there are dozens of other spaces and classrooms on campus to match the needs for any meeting or event.

total rooms: **750** (May – July, located in residence halls, all double occupancy with communal bathrooms)

total meeting rooms: **27 DEDICATED ROOMS +70 CLASSROOMS**

meeting space: **OVER 80,000 SQUARE FEET**

distance from airport: **8 MILES**

location: **DOWNTOWN**

WWW.UMT.EDU/EVENTSERVICES



MISSOULA FAIRGROUNDS

The newly renovated, historic Missoula Fairgrounds covers an impressive 46 acres in the heart of Midtown—a great location for food lovers and shopaholics, who can enjoy dozens of tasty restaurants and trendy stores found in the area. Find the perfect meeting space by taking a virtual tour of the facilities on the Missoula Fairgrounds website. And be sure to check out their online event calendar too—you might be able to catch a fair, rodeo, exhibit or other fun happening while you're at the fairgrounds for your gathering.

Missoula Fairgrounds land size: **46 ACRES**

event capacity: **5,000 PEOPLE**

largest event space: **12,000 SQUARE FEET**

total event space: **25,000 SQUARE FEET**

distance from airport: **7 MILES**

location: **MIDTOWN**

WWW.MISSOULAFAIRGROUNDS.COM



HILTON GARDEN INN

Conveniently located off Interstate 90 and just minutes from downtown and the airport. The hotel offers a state-of-the-art business center with remote printing from each guestroom. Get a great night's sleep in a signature Garden Sleep System adjustable bed after enjoying creative American cooking at the Blue Canyon Kitchen and Tavern.

total guestrooms: **146**

total meeting rooms: **15**

meeting space: **22,000 SQUARE FEET**

largest meeting room: **13,195 SQUARE FEET**

distance from airport: **2.6 MILES**

location: **BUSINESS DISTRICT**

WWW.MISSOULA.HGI.COM



HOLIDAY INN MISSOULA DOWNTOWN

Missoula's largest full-service hotel has 198 newly refreshed guest rooms, 20,000sf of flexible meeting space, a park-like outdoor venue and a full-service restaurant and bar. Centrally located downtown along the Clark Fork River - just steps from vibrant shopping, nightlife and entertainment. With the best location and superior conference service, groups are guaranteed a distinctive Missoula experience. Complimentary features include: indoor swimming pool, fitness center, business center, wi-fi, on-site guest parking {a rarity in the Heart of Downtown}, airport and area-wide transportation.

total guestrooms: **198**

total meeting space: **20,000 SQUARE FEET**

Missoula's largest outdoor hotel venue space, capacity: **750 PPL SEATED**

total meeting rooms: **10**

largest meeting room: **5,500 SQUARE FEET**

distance from airport: **5.8 MILES**

location: **DOWNTOWN**

WWW.IHG.COM/HOLIDAYINN/HOTELS/US/EN/MISSOULA/MSUMT/HOTELDETAIL





MCT, INC. | MISSOULA CHILDREN'S THEATRE & MISSOULA COMMUNITY THEATRE

MCT is a great location for the meeting planner in search of a fun and unique venue. Several rooms are available for rent including the theatre and lobby, a conference room, a community room, a meeting room and 4 multi-purpose classrooms.

seating capacity: **300**

total meeting space: **20,000 SQUARE FEET**

total meeting rooms: **13**

largest meeting room: **2,112 SQUARE FEET**

distance from airport: **7.4 MILES**

location: **DOWNTOWN**

WWW.MCTINC.ORG



DOUBLETREE BY HILTON, MISSOULA EDGEWATER

Overlooking the Clark Fork River, the hotel features spacious guest rooms rich with amenities including free high-speed wireless internet. Enjoy Montana's finest selection of seafood, steaks and chops at FINN Restaurant. The hotel offers easy access to hiking/jogging trails, fishing areas and downtown Missoula.

total guestrooms: **171**

total meeting space: **9,000 SQUARE FEET**

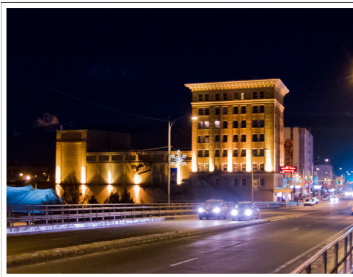
total meeting rooms: **9**

largest meeting room: **6,345 SQUARE FEET**

distance from airport: **7.2 MILES**

location: **DOWNTOWN**

WWW.MISSOULAEDGEWATER.DOUBLETREE.COM



THE WILMA

The recently renovated Wilma combines a state-of-the-art facility with one of the most beautiful and historic spaces in the State of Montana. Available for both day and evening rentals, The Wilma can accommodate a variety of events ranging from weddings, receptions, corporate meetings, seated banquets, film screenings, luncheons, holiday parties and conventions.

event capacity: **800**

banquet capacity: **250**

total meeting space: **4,500 SQUARE FEET**

distance from airport: **7.6 MILES**

location: **DOWNTOWN**

WWW.THEWILMA.COM



BROADWAY INN CONFERENCE CENTER

The Broadway Inn is conveniently located at the corner of West Broadway and Mullan Road, just minutes from the airport, downtown Missoula and the University of Montana. The conference facility is an ideal place for business meetings, conferences, weddings, reunions and social events.

total guestrooms: **79**

total meeting space: **4,000 SQUARE FEET**

total meeting rooms: **3**

largest meeting room: **2,500 SQUARE FEET**

distance from airport: **4.2 MILES**

location: **BUSINESS DISTRICT**

WWW.BROADWAYMISSOULA.COM



BEST WESTERN PLUS GRANT CREEK INN

Currently listed as #1 on TripAdvisor for Missoula; the Best Western maintains this position by guaranteeing the most satisfactory guest experience in town. In addition to outstanding guest service, the hotel features a full hot complimentary breakfast, WiFi, pool, sauna, steam room and recently renovated guestrooms.

total guestrooms: **126**

total meeting space: **3,774 SQUARE FEET**

total meeting rooms: **6**

largest meeting room: **2,393 SQUARE FEET**

distance from airport: **3 MILES**

location: **BUSINESS DISTRICT**

WWW.BESTWESTERN.COM/GRANTCREEKINN





FAIRFIELD INN & SUITES BY MARRIOTT

A warm, welcoming hotel with services and amenities that will make you feel at home. One mile from the airport with easy access to I-90, make for a perfect location for meetings. Enjoy complimentary breakfast, WiFi, business center and waterpark. Spacious guest rooms invite visitors to relax, but it is the service that keeps guests coming back.

total guestrooms: 100
total meeting space: 3,640 SQUARE FEET
total meeting rooms: 5
largest meeting room: 2,100 SQUARE FEET

distance from airport: 0.8 MILES
location: AIRPORT
WWW.MARRIOTT.COM/EN-US/HOTELS/MSOFI-FAIRFIELD-INN-AND-SUITES-MISSOULA/OVERVIEW/



FAIRBRIDGE INN & SUITES

Nicely located adjacent to Larchmont Golf Course, Missoula bike paths and Fort Missoula. Close to Southgate Mall and the University of Montana. Guests stays are comfortable with a free hot breakfast, wireless internet, fitness center and guest laundry facilities.

total guestrooms: 80
total meeting space: 3,580 SQUARE FEET
total meeting rooms: 6
largest meeting room: 2,500 SQUARE FEET

distance from airport: 7 MILES
location: SOUTH CORRIDOR
WWW.FAIRBRIDGEMISSOULA.COM

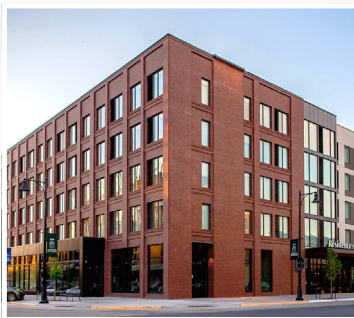


COURTYARD MISSOULA

Choose to relax and recharge in one of the newly renovated rooms or stay and experience the perfect place to work. Choose to kick back and unwind in the redesigned lobby or meet up with colleagues for breakfast. Choose a bit of fresh air outdoors on the patio with views of Grant Creek or cozy up next to the fire pit.

total guestrooms: 92
total meeting space: 2,666 SQUARE FEET
total meeting rooms: 3
largest meeting room: 1,372 SQUARE FEET

distance from airport: 3 MILES
location: BUSINESS DISTRICT
WWW.MARRIOTT.COM/MSOCY



RESIDENCE INN MISSOULA DOWNTOWN

Located in the heart of downtown Missoula at the historical Mercantile site, the Residence Inn by Marriott is an extended stay, full service hotel featuring guest room suites with kitchens, complimentary Wi-Fi and grocery shopping and delivery service. Two modern and well-appointed meeting rooms provide a unique space to meet in downtown Missoula.

total guestrooms: 175
total meeting space: 1,506 SQUARE FEET
total meeting rooms: 2
largest meeting room: 1,506 SQUARE FEET

distance from airport: 5.7 MILES
location: DOWNTOWN
WWW.MARRIOTT.COM/MSORI



THE FOLLOWING PROPERTIES HAVE MEETING SPACE WITH LESS THAN 1,500 SQ FT PERFECT FOR A BOARD MEETING OR INTIMATE GET-TOGETHER:

StoneCreek Lodge, C'Mon Inn & Suites, Staybridge Suites, AC by Marriott, Red Lion, The Wren, La Quinta, and Holiday Inn Express.

3 RIVERS to fly fish, kayak, boat, paddle board, river surf, float or simply admire.



4 WEEKLY SUMMER DOWNTOWN MARKETS to stroll and savor Missoula's vibrancy.



39 FOOD TRUCKS to satisfy the palate of every type of foodie.



10 ART GALLERIES AND MUSEUMS displaying local artwork, from classic western to modern styles.

7 WILDERNESS AREAS to hike, bike, climb, camp and explore.



14 CRAFT BREWERIES, THREE DISTILLERIES, ONE CIDERY & ONE WINERY serving up Montana-inspired flavors and flights.



There's this place where inspiration flows as easily as our rivers. Missoula, Montana, a short and scenic 2 ½ hour drive south of Glacier National Park, is a place where artists, musicians, outdoor enthusiasts and culinary masters come to thrive. Some might call it unique, cool or hip. Others will experience it as serene, welcoming and replete with natural beauty. You might see it as vibrant, active and pulsating with places to go and things to do. The beauty of Missoula is that it is all these things and more.

THERE'S THIS PLACE *where* MORE THAN RIVERS MEET

There's a meetings destination where ideas are inspired by nature and nurtured by unexpected sophistication. Where hospitality, technology and amenities are top notch. Where groups gather to experience a town pulsating with arts, culture, food, drink, rich roots and friendly locals, not to mention three rivers and seven wilderness areas. Come together in Missoula—a world-class meeting place for corporate events, retreats, conferences and conventions. For small town charm with big experiences, meet in Missoula!

COMPLIMENTARY MEETING & EVENT PLANNING SERVICES: Put our industry experience, local connections and creativity to work for you!



SITE SELECTION SERVICES:

- RFP distribution to qualified hotels and venues
- Hotel and venue site selection
- Site inspection coordination

MEETING PLANNING SERVICES:

- Destination expertise and impartial liaisons with hotels, venues, city facilities and services
- Assistance with local permitting

ATTENDANCE PROMOTION:

- Missoula images and videos
- Customized itineraries for pre-post meeting travel, entertainment and fun
- Local materials and resources to enhance attendees' experience in Missoula
 - Welcome bags, visitor guides, city maps, attraction brochures, weekly events flyer and more!
- Welcome signage at Missoula Montana Airport, host hotel or meeting venue, and in storefronts of local business 
- Visitor information booth at host hotel or meeting venue 

SYMBOLS LEGEND:  Based on group size



**Ask us about incentives and financial support, including the
Missoula Tourism Business Improvement District (TBID) Grant**

25 BEST TOWNS EVER
Outside Magazine, July 2017

20 GAME CHANGING PLACES TO LIVE
Sunset, March 2019

24 COOLEST TOWNS IN THE USA
Matador Network, March 2017

For site selection services contact [Heidi Starrett](#), Director of Sales, at 406.532.3398 or heidi@destinationmissoula.org and [Kara Bartlett](#), Group Sales Manager- Sports, Tour/Travel, Special Events, at 406.532.3399 or kara@destinationmissoula.org